

# SIBYL

**Seismic monitoring and vulnerability framework for civil protection**



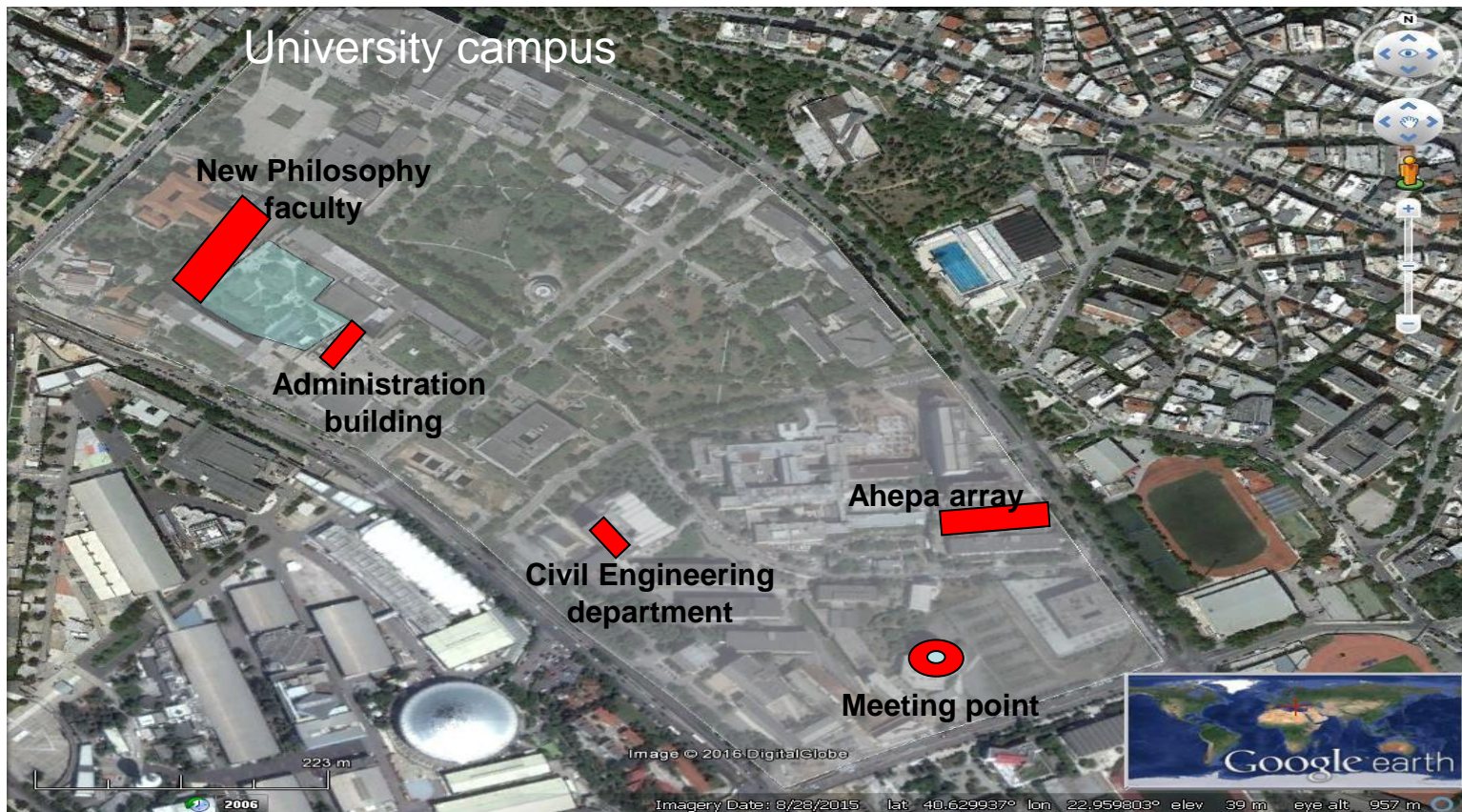
**SOSEWIN installation  
in Thessaloniki applications**

***Aristotle University of Thessaloniki***

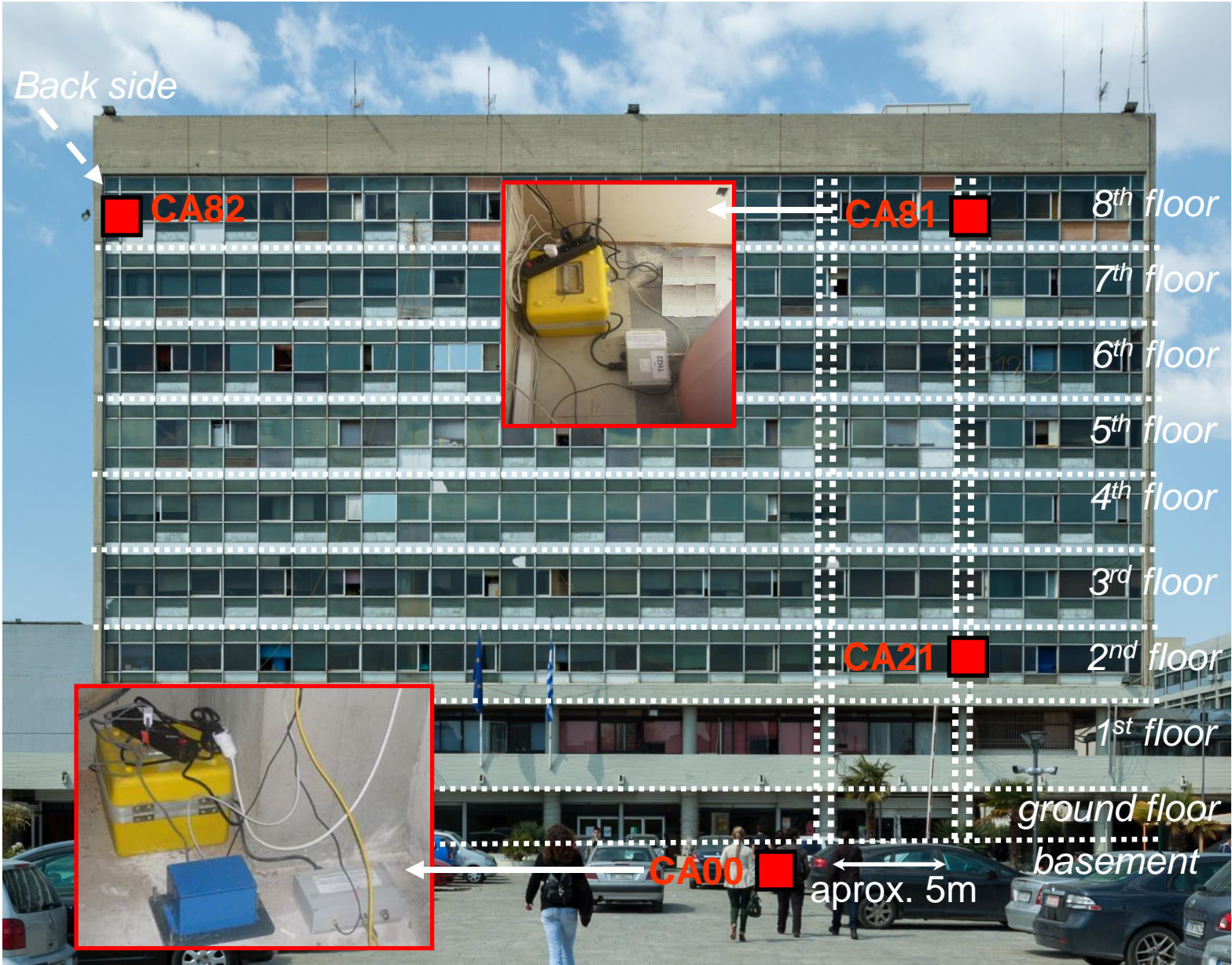


## New Sosewin installations

- 6 SOSEWIN stations installed on January-April 2015
  - 4 at the Administration building
  - 2 at the new Philosophy faculty
- Installation close to specific columns & on the floor
- Continuous recording at 100sps
- Data transfer through TCP/IP connection >> to lab server: [sdee-dat.civil.auth.gr](http://sdee-dat.civil.auth.gr)



# Administration building



SIBYL – Mid- term meeting, Thessaloniki 15<sup>th</sup> – 16<sup>th</sup> February 2016

# New Philosophy faculty

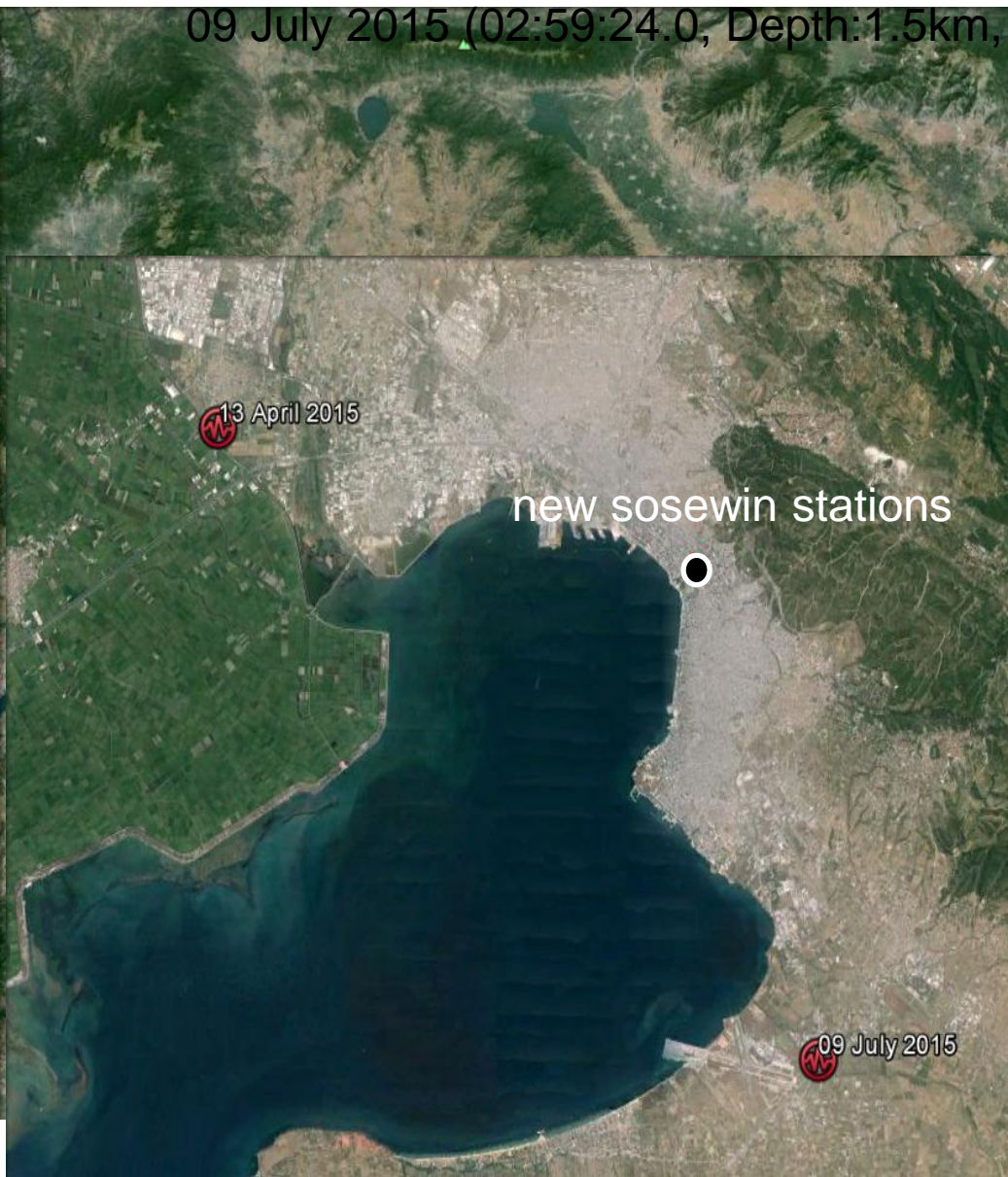


# Earthquakes recorded at the new SOSEWIN stations

13 April 2015 (04:14:15.3, Depth:8.3km, ML2.2, Thessaloniki area) ←

09 July 2015 (02:59:24.0, Depth:1.5km, ML2.7, Thessaloniki area) ←

(source: <http://geophysics.geo.auth.gr>)



dd	mon	y	hh:mm:ss.ss	lat	lon	Depth	mag(MLwa)	Region
22	JAN	15	20:52:48.9	40.621N	23.283E	13.20km	3.0	MYGDONIA Basin - N. GREECE
29	JAN	15	05:04:43.8	40.209N	23.934E	1.50km	2.3	CHALKIDIKI - N. GREECE
15	FEB	15	10:20:50.6	40.344N	23.935E	8.10km	2.0	CHALKIDIKI - N. GREECE
04	MAR	15	02:56:32.6	40.418N	23.457E	9.20km	2.1	CHALKIDIKI - N. GREECE
24	MAR	15	07:56:22.2	40.536N	23.580E	1.20km	2.0	CHALKIDIKI - N. GREECE
28	MAR	15	09:58:08.5	40.227N	23.969E	12.30km	2.8	CHALKIDIKI - N. GREECE
29	MAR	15	03:40:05.8	40.049N	23.711E	4.50km	2.2	CHALKIDIKI - N. GREECE
30	MAR	15	15:18:51.8	40.971N	22.451E	8.20km	2.1	Central MACEDONIA - N. G.
31	MAR	15	22:52:39.0	40.922N	22.481E	6.80km	2.0	Central MACEDONIA - N. G.
01	APR	15	14:27:39.1	40.902N	22.463E	4.20km	2.1	Central MACEDONIA - N. GREECE
01	APR	15	17:56:22.7	40.901N	22.481E	1.40km	2.1	Central MACEDONIA - N. GREECE
02	APR	15	01:51:16.6	40.913N	22.477E	3.70km	2.4	Central MACEDONIA - N. GREECE
02	APR	15	02:18:11.2	40.928N	22.461E	7.40km	2.0	Central MACEDONIA - N. GREECE
02	APR	15	12:02:12.0	40.919N	22.462E	1.30km	2.3	Central MACEDONIA - N. GREECE
03	APR	15	20:13:38.4	40.988N	22.504E	4.10km	2.1	Central MACEDONIA - N. GREECE
03	APR	15	22:01:09.5	40.990N	22.501E	6.10km	2.1	Central MACEDONIA - N. GREECE
03	APR	15	22:07:41.0	40.984N	22.472E	11.00km	2.0	Central MACEDONIA - N. G.
03	APR	15	23:22:57.6	40.991N	22.505E	4.60km	2.1	Central MACEDONIA - N. GREECE
04	APR	15	01:47:08.6	40.985N	22.481E	8.60km	2.1	Central MACEDONIA - N. GREECE
11	APR	15	08:22:18.2	40.904N	22.474E	2.00km	2.2	Central MACEDONIA - N. GREECE
11	APR	15	08:23:43.3	40.964N	22.463E	4.30km	2.1	Central MACEDONIA - N. GREECE
11	APR	15	09:02:27.3	40.914N	22.463E	5.10km	2.1	Central MACEDONIA - N. GREECE
11	APR	15	12:44:57.1	40.914N	22.474E	3.00km	2.4	Central MACEDONIA - N. GREECE
12	APR	15	02:54:41.1	40.917N	22.482E	2.80km	2.6	Central MACEDONIA - N. GREECE
12	APR	15	06:11:47.5	40.935N	22.464E	6.80km	2.0	Central MACEDONIA - N. GREECE
12	APR	15	08:57:26.5	40.906N	22.468E	6.60km	2.0	Central MACEDONIA - N. GREECE
13	APR	15	04:14:15.3	40.654N	22.802E	8.30km	2.2	THESSALONIKI - N. GREECE
04	MAY	15	02:49:48.6	40.932N	22.554E	1.20km	2.5	Central MACEDONIA - N. GREECE
04	MAY	15	03:47:41.4	40.960N	22.507E	9.80km	2.2	Central MACEDONIA - N. GREECE
04	MAY	15	04:29:05.1	40.955N	22.518E	12.20km	2.3	Central MACEDONIA - N. GREECE
04	MAY	15	04:58:16.1	40.924N	22.530E	6.70km	2.2	Central MACEDONIA - N. GREECE
05	MAY	15	00:17:13.0	40.932N	22.549E	4.70km	2.5	Central MACEDONIA - N. GREECE
05	MAY	15	01:24:20.7	40.943N	22.540E	1.20km	2.4	Central MACEDONIA - N. GREECE
20	MAY	15	15:03:14.9	40.949N	22.429E	1.60km	2.1	Central MACEDONIA - N. GREECE
09	JUL	15	02:59:24.0	40.517N	22.995E	1.50km	2.7	THESSALONIKI - N. GREECE
27	OCT	15	18:30:15.7	40.058N	23.684E	5.60km	2.2	CHALKIDIKI - N. GREECE
27	OCT	15	21:38:21.7	40.187N	23.501E	6.80km	2.0	CHALKIDIKI - N. GREECE
05	NOV	15	15:15:12.8	40.198N	23.278E	1.70km	2.1	CHALKIDIKI - N. GREECE
25	NOV	15	16:29:26.9	40.245N	23.911E	10.60km	2.4	CHALKIDIKI - N. GREECE
27	NOV	15	08:28:29.4	40.008N	23.631E	16.10km	2.4	CHALKIDIKI - N. GREECE
01	DEC	15	07:22:26.3	40.950N	23.893E	9.20km	2.2	Eastern MACEDONIA - N. GREECE
02	DEC	15	22:38:39.5	40.146N	22.551E	9.10km	2.4	Central MACEDONIA - N. GREECE
08	DEC	15	05:43:13.3	40.962N	22.526E	1.50km	2.1	Central MACEDONIA - N. GREECE
16	DEC	15	00:36:12.0	40.342N	22.489E	9.50km	2.1	Central MACEDONIA - N. GREECE
23	DEC	15	13:18:43.1	40.626N	23.462E	9.70km	2.0	MYGDONIA Basin - N. GREECE
12	JAN	16	21:45:40.0	40.592N	22.450E	9.10km	2.9	Central MACEDONIA - N. GREECE
15	JAN	16	23:06:10.4	40.465N	23.920E	8.40km	3.0	CHALKIDIKI - N. GREECE
18	JAN	16	17:20:05.9	40.602N	23.869E	9.40km	3.1	CHALKIDIKI - N. GREECE
23	JAN	16	07:13:17.0	40.611N	22.440E	14.60km	2.2	Central MACEDONIA - N. GREECE
23	JAN	16	08:45:53.8	40.574N	22.421E	15.40km	2.2	Central MACEDONIA - N. GREECE

# Earthquakes recorded at the new SOSEWIN stations

13 April 2015 (04:14:15.3, Depth:8.3km, ML2.2, Thessaloniki area)

